

**NCS1 / Neuronal Calcium Sensor Antibody**  
**Rabbit Polyclonal Antibody**  
**Catalog # ALS11756****Specification**

---

**NCS1 / Neuronal Calcium Sensor Antibody - Product Information**

Application	WB, IHC-P, IF, E
Primary Accession	<a href="#">P62166</a>
Reactivity	Human, Mouse, Rat
Host	Rabbit
Clonality	Polyclonal
Calculated MW	22kDa KDa
Dilution	WB~~1:1000 IHC-P~~N/A IF~~1:50~200 E~~N/A

**NCS1 / Neuronal Calcium Sensor Antibody - Additional Information****Gene ID** 23413**Other Names**

Neuronal calcium sensor 1, NCS-1, Frequenin homolog, Frequenin-like protein, Frequenin-like ubiquitous protein, NCS1, FLUP, FREQ

**Target/Specificity**

Frequenin (recombinant from Mouse with extensive post-translational modifications).

**Reconstitution & Storage**

Store vial at -20 C prior to opening. Dilute only prior to immediate use. For extended storage aliquot contents and freeze at -20 C or below. Avoid cycles of freezing and thawing.

**Precautions**

NCS1 / Neuronal Calcium Sensor Antibody is for research use only and not for use in diagnostic or therapeutic procedures.

**NCS1 / Neuronal Calcium Sensor Antibody - Protein Information****Name** NCS1**Synonyms** FLUP, FREQ**Function**

Neuronal calcium sensor, regulator of G protein-coupled receptor phosphorylation in a calcium dependent manner. Directly regulates GRK1 (RHOK), but not GRK2 to GRK5. Can substitute for calmodulin (By similarity). Stimulates PI4KB kinase activity (By similarity). Involved in long-term synaptic plasticity through its interaction with PICK1 (By similarity). May also play a role in neuron differentiation through inhibition of the activity of N-type voltage- gated calcium channel (By

similarity).

#### Cellular Location

Golgi apparatus. Postsynaptic density. Cytoplasm, perinuclear region. Cytoplasm {ECO:0000250|UniProtKB:P62168}. Cell membrane; Peripheral membrane protein. Membrane {ECO:0000250|UniProtKB:P62168}; Lipid-anchor Note=Associated with Golgi stacks. Post-synaptic densities of dendrites, and in the pre-synaptic nerve terminal at neuromuscular junctions. {ECO:0000305, ECO:0000305|PubMed:17555535}

#### Volume

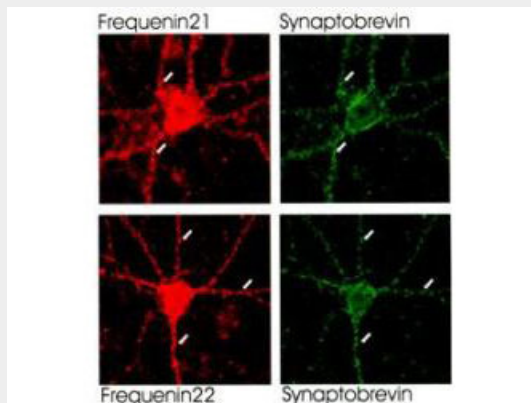
50 µl

### NCS1 / Neuronal Calcium Sensor Antibody - Protocols

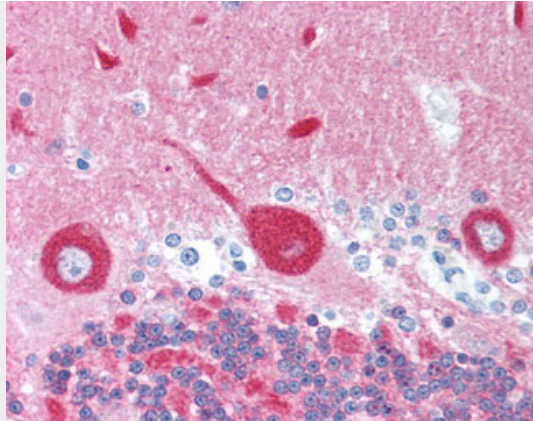
Provided below are standard protocols that you may find useful for product applications.

- [Western Blot](#)
- [Blocking Peptides](#)
- [Dot Blot](#)
- [Immunohistochemistry](#)
- [Immunofluorescence](#)
- [Immunoprecipitation](#)
- [Flow Cytometry](#)
- [Cell Culture](#)

### NCS1 / Neuronal Calcium Sensor Antibody - Images



Anti-FREQUENIN Antibody - Immunofluorescence Microscopy.



Anti-NCS-1 antibody IHC of human brain, cerebellum.

### **NCS1 / Neuronal Calcium Sensor Antibody - Background**

Neuronal calcium sensor, regulator of G protein-coupled receptor phosphorylation in a calcium dependent manner. Directly regulates GRK1 (RHOK), but not GRK2 to GRK5. Can substitute for calmodulin (By similarity). Stimulates PI4KB kinase activity (By similarity). Involved in long-term synaptic plasticity through its interaction with PICK1 (By similarity). May also play a role in neuron differentiation through inhibition of the activity of N- type voltage-gated calcium channel (By similarity).

### **NCS1 / Neuronal Calcium Sensor Antibody - References**

Lindemeier J.R.,et al.Submitted (JAN-1995) to the EMBL/GenBank/DDBJ databases.  
Bao X.G.,et al.Submitted (MAR-1999) to the EMBL/GenBank/DDBJ databases.  
Nef S.,et al.Submitted (JUN-1999) to UniProtKB.  
Pongs O.,et al.Submitted (SEP-1999) to the EMBL/GenBank/DDBJ databases.  
Humphray S.J.,et al.Nature 429:369-374(2004).